



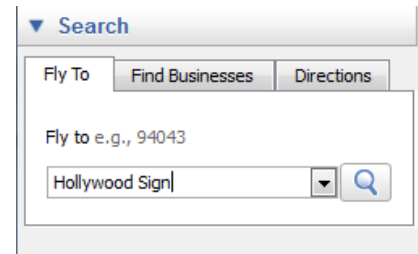
What is Google Earth?

- Explore satellite imagery, terrain and 3D buildings, from galaxies in outer space to the canyons of the ocean
- View historical imagery from around the globe
- Create a custom tour with audio and voice recording

Navigation Basics

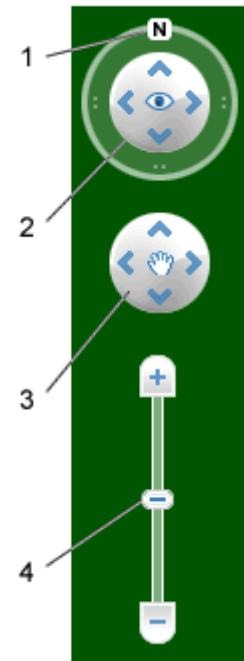
Fly To a Location

- Enter an address or city name, click the magnifying glass, and zoom directly to that location
- Locate famous landmarks



Using Navigation Tools

1. North-Up button – Click to reset the view so that north is at the top of the screen.
 - a. Click and drag the ring to rotate your view.
2. Look joystick – Look around from a single vantage point, as if you were turning your head.
 - a. Click an arrow to look in that direction or continue to press down on the mouse button to change your view.
 - b. After clicking an arrow, move your mouse around on the joystick to change the direction of your motion.
3. Move joystick – Move your position from one place to another
 - a. Click an arrow to look in that direction or continue to press down on the mouse button to change your view.
4. Zoom slider – Use the slider or the + and – icons at the end of the slider to zoom in and out.
 - a. View will automatically tilt as you reach the surface of the earth.



Keyboard Shortcuts

1. Move in any direction – Click and drag
2. Zoom
 - a. Press and hold the right mouse button and move the mouse forward or backward
 - b. Scroll backward and forward with the mouse scroll wheel
3. Tilt – hold the SHIFT button and scroll forward and backward with the mouse scroll wheel
4. Look – hold the CTRL key, click the left mouse button and drag

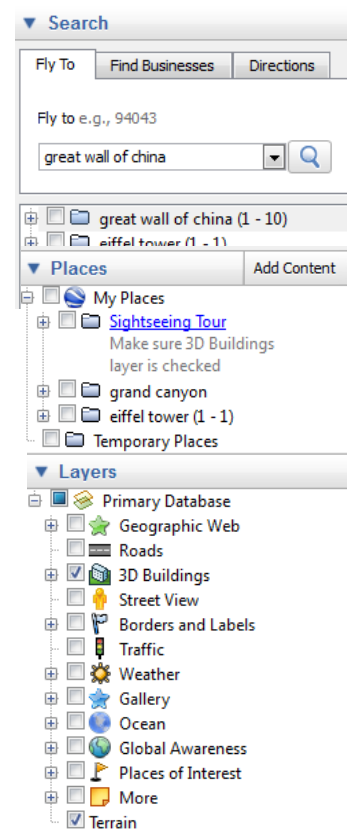
Saving Places

The Places pane provides an easy way to save locations for future viewing.

- To save an item, right-click in the Search pane and select Add to My Places

Layers

The Layers pane lists additional types of information available for viewing. Turning a layer on makes this information visible when viewing a location



The Toolbar



Conceal or the display the side bar



Add a [placemark for a location](#)



[Add a polygon](#)



[Add a path \(line or lines\)](#)



Add an [image overlay on the Earth](#)



[Record a tour](#)



[Display historical imagery](#)



[Display sunlight](#) across the landscape



[View the sky, moon and planets](#)



[Measure a distance or area size](#)



Email a [view](#) or [image](#).



Print the current view of the Earth



Show the current view in Google Maps